

### SOUND / SON

#### F.O.H.

48/8/12	MIDAS XL200
1x (2x30 BAND)	KLARK TEKNIK DN360
1x MULTI-FX	YAMAHA SPX 900
1x MULTI-FX	LEXICON PCM90
1x MULTI-FX	YAMAHA SPX 990
1x MULTI-FX (DELAY)	TC D-TWO
1x QUAD NOISE GATE	BSS DPR 504
1x NOISE GATE	APHEX
2x COMPR./LIM	BSS DPR 404
2x COMPRESSOR	DBX 160A

#### MICROPHONES / MICROS

6x SHURE SM 58
7x SHURE SM 57
1x SHURE BETA 57
1x SHURE BETA 52
1x SHURE KSM 9
4x ELECTRO-VOICE PL 80
2x AUDIOTECHNIKA AT2020
2x AKG D112
4x AKG C451
2x SENNHEISER E609
5x SENNHEISER E604
2x SENNHEISER MD421
4x AKG D535 - C1000
10x DI BOX

#### AMPLIFICATION - P.A.

##### AMPLIFIERS

LAB GRUPPEN	4x LA 48A
-------------	-----------

##### PROCESSORS

XTA	1x DP 448
-----	-----------

##### SPEAKERS

L. ACOUSTIC	6x ARCS
	4x SUB SB 218 L. ACOUSTIC

#### MON.

40/12/8	ALLEN&HEATH ML4000
1x QUAD COMP.	BSS DPR 404
1x MULTI-FX	LEXICON LXP 15
4x (2x30 BAND)	KLARK TEKNIK DN360
8x WEDGE	MARTIN AUDIO LE 400B
8x CHANNEL AMP.	4x CREST AUDIO 4801
1x GATE	DRAWMER

#### DJ

1x ALLEN&HEATH XONE 32
4x TECHNICS 1210 MKII
2x DENON CD

### LIGHT / LUMIERE (PLEASE SEE DIAGRAM PAGE 3)

18x PAR THOMAS 1000W
2x ACL 8X 250W
4x DC STRAND 1000W
4x PC 1000W STRAND
4x ROBE COLORSPOT 575WATT
4x FRESNEL 1000W STRAND
3x HALOGEN 1000W
2x GENI GIGA STROBES 2,7K
1x SMOKE MACHINE JEM ZR-33 HI-MASS OR HAZER
1x MA-LIGHTNING DESK 24/48 CHANNELS
PROGRAMMATION DMX 512
1x JB LIGHT LICON DESK
1x DIMMER PACK 24x2KW DIGITAL IMPULSE
4x PILOT WASH 250

### BUILDING / BATIMENT

#### SCENE / STAGE (PLEASE SEE DIAGRAM NEXT PAGE)

SIZE
45M <sup>2</sup> / 487 SQFT

#### WIDTH

9M / 29'6"
------------

#### DEPTH

5M / 16'6"
------------

#### CLEARANCE

4M / 13'2"
------------

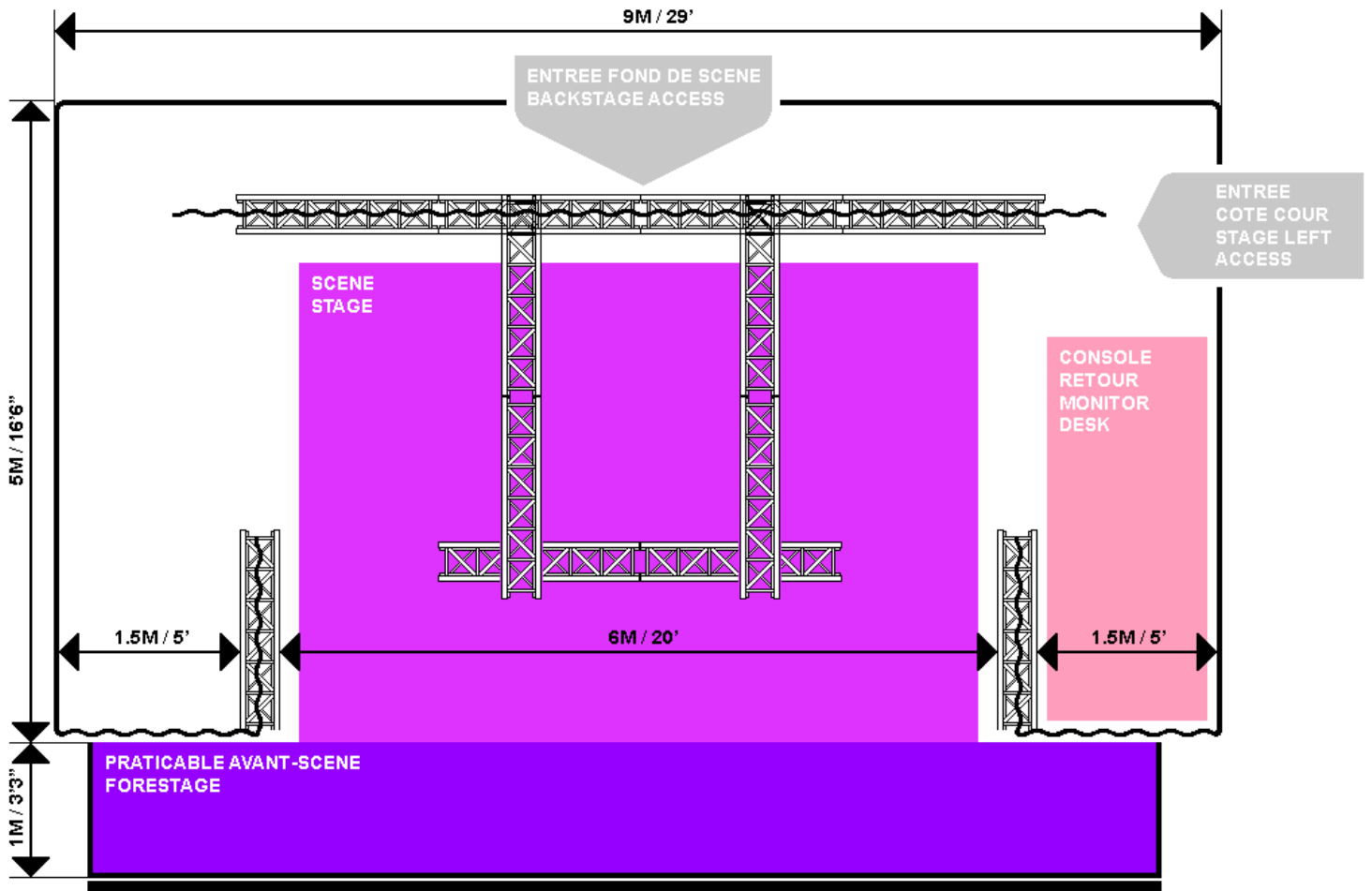
#### CAPACITY

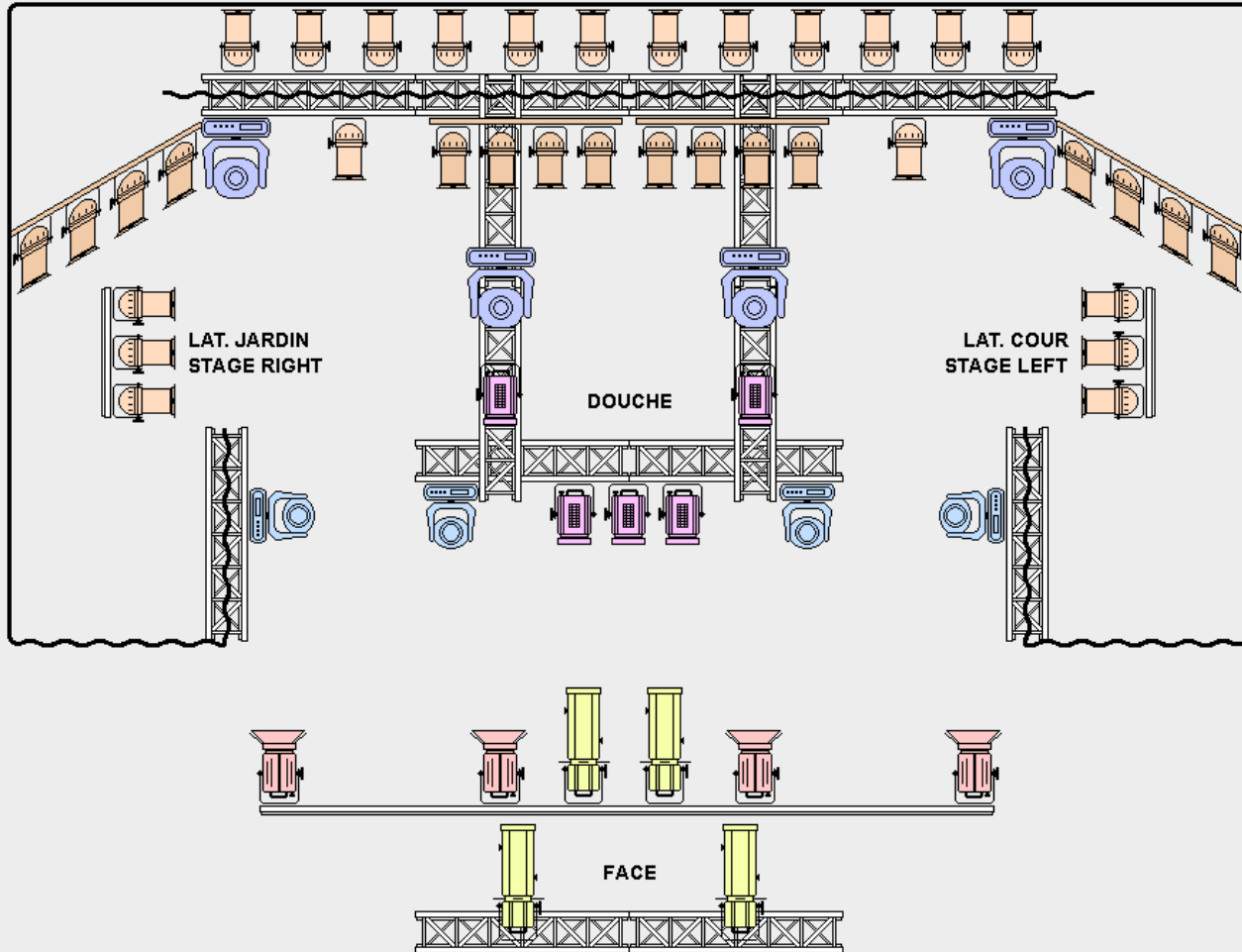
~650 PEOPLE / ~650 PERSONNES
------------------------------

THE DRESSING ROOM IS EQUIPPED  
WITH A TOILET AND A SHOWER /  
LES LOGES SONT EQUIPEES DE WC ET DOUCHE

### SOUND ENGINEER / INGENIEUR DU SON

DAVID TABACHNIK  
TECH@ROCKING-CHAIR.CH





DRAWINGS BY SEB, PIMPED OUT BY EMY



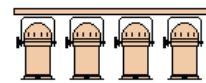
FRESNEL FACE (1KW)



PAR 64 (1KW)



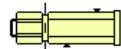
LYRE WASH



ACL



PC DOUCHE (1KW)



DECOUPE (1KW)



LYRE SPOT